

Endangered Species Trading Cards

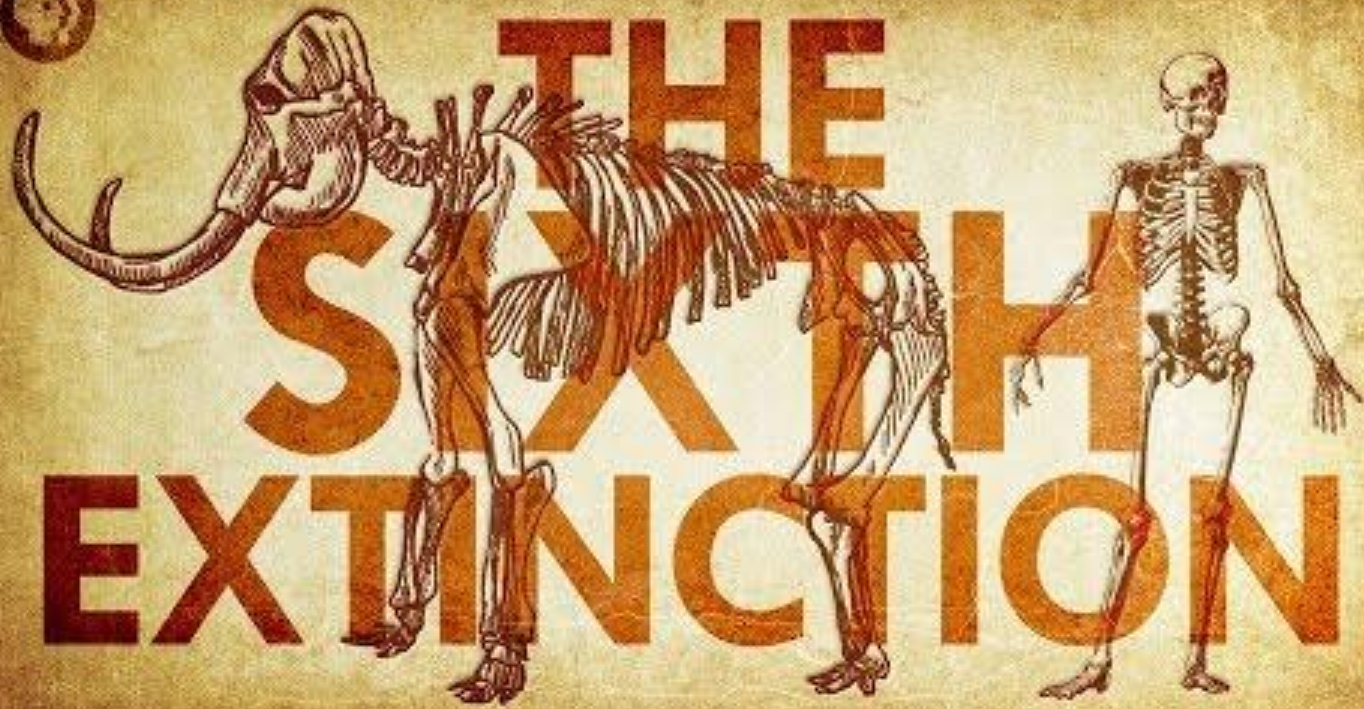
A fun way to raise student awareness toward Endangered Species.

Academic Standards

ENV. 5.5 - Identify the indirect and direct threats to biodiversity (e.g. habitat loss and destruction, invasion by exotic species, commercial over-fishing and hunting, pollution, climate change, and bioaccumulation and biomagnification of toxins).

B.3.2 - Design, evaluate, and refine a model which shows how human activities and natural phenomena can change the flow of matter and energy in an ecosystem and how those changes impact the environment and biodiversity of populations in ecosystems of different scales, as well as, how these human impacts can be reduced.

EIN-4.B - Explain how species become endangered and strategies to combat the problem.



THE SIXTH EXTINCTION

Trading Cards

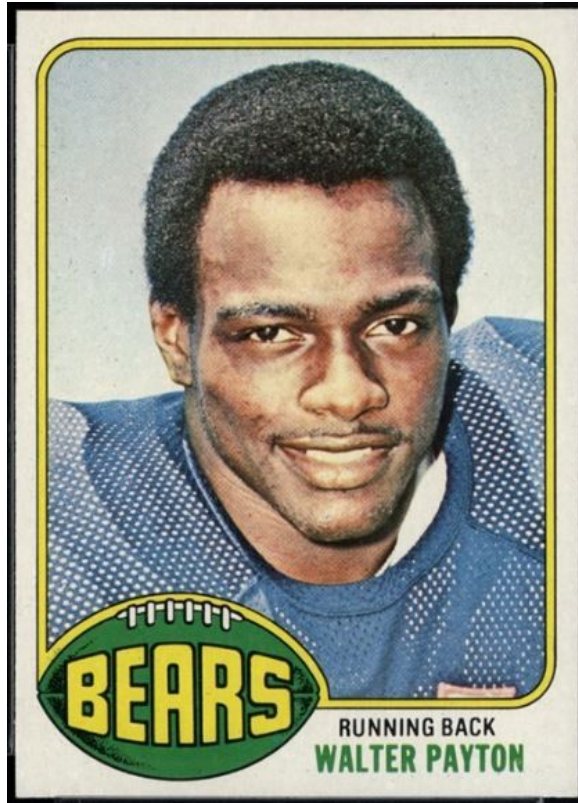


Image Source:
<https://allvintagecards.com/wp-content/uploads/2019/06/payton-rookie.jpg>

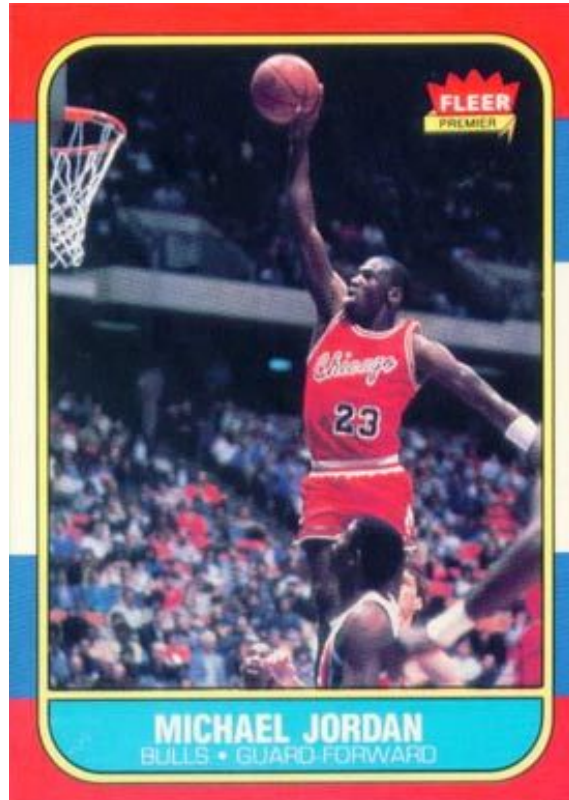


Image source:
<https://www.oldsportscards.com/wp-content/uploads/2017/01/1986-Fleer-Michael-Jordan-Rookie-Card.jpg>

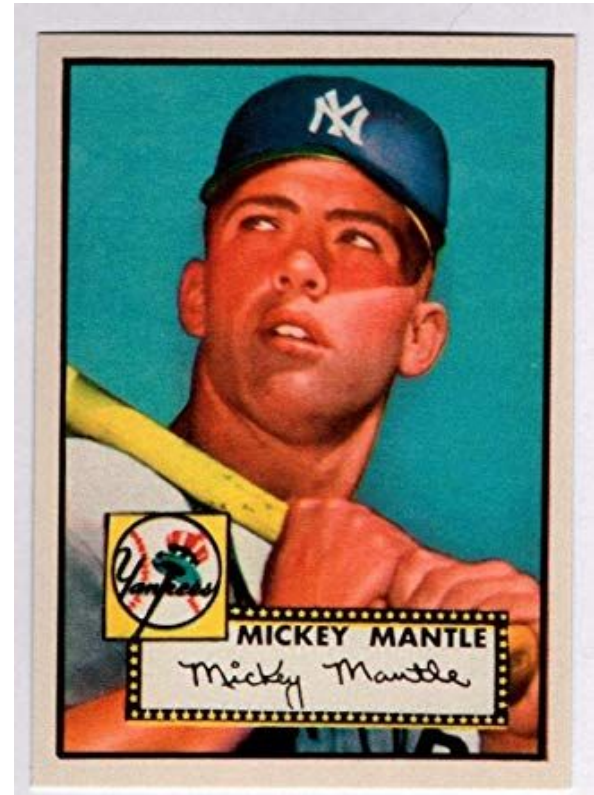


Image Source:
https://images-na.ssl-images-amazon.com/images/I/71Be4lBpKuL._AC_SY445_.jpg

[Advanced](#)[About](#)[Assessment process](#)[Resources & Publications](#)[Support us](#)[Grid](#)[List](#)[Map](#)[Stats](#)[Relevance](#)

TYPE ?

- Species
- Featured Regions
- Documents

SEARCH FILTERS ?

- [Taxonomy](#)
- [Red List Category](#)
- [Land Regions](#)
- [Country Legends](#)
- [Marine Regions](#)
- [Threats](#)
- [Habitats](#)
- [Conservation Actions Needed](#)
- [Research Needed](#)

RESULTS (546)

[Download](#)[Save search](#)

Geographical Scope

[Global](#)

Include

[Amazing Species](#) 

PLANTAE - MAGNOLIOPSIDA

GLOBAL

Waterwheel*Aldrovanda vesiculosa*

ANIMALIA - ACTINOPTERYGII

GLOBAL

Black Musselcracker*Cymatoceps nasutus*

ANIMALIA - REPTILIA

GLOBAL

Laticauda schistorhynchus[feedback](#)

Endangered Species Trading Cards

Blue Mountain Water Skink

Eulamprus leuansis



Status: Endangered

Country/Region: Australia

Number of mature individuals: ?

Habitat and Ecology: Grassland,
Shrubland, Wetlands (Inland)

Blue Mountain Water Skink

Eulamprus leuensis

Threats:

Altered hydrology due to draining of
swamps

Habitat degradation

Recreational vehicles

Pollution

Infrastructure Development

Conservation Action Needed:

Site/area protection, resource & habitat
protection, site/area management,
invasive/problematic species control,
habitat & natural process restoration,
species re-introduction.

Shea, G., Cogger, H. & Greenlees, M. 2018. *Eulamprus leuansis*. *The IUCN Red List of Threatened Species* 2018: e.T8187A101743426.

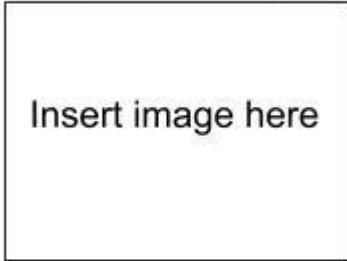
<http://dx.doi.org/10.2305/IUCN.UK.2018-1.RLTS.T8187A101743426.en>. Downloaded on 10 September 2019.

Let's Get Started!

<http://bit.ly/ESTC-front2>

(Common Name)

(*Scientific Name*)



Status: (Status)

Country/Region: (Country/Region)

Number of mature individuals: (# or
?)

Habitat and Ecology: (Habitat and
Ecology)

<http://bit.ly/ESTC-Back2>

Common Name

Scientific Name

Threats: (Be sure to read the Threats in detail and summarize in a sentence or two the primary threats)

Conservation Action Needed: (List all of them)

(Copy and paste citation from IUCN here)

If you want to use these with your own students then you will need to make a copy and save it to your Google Drive.

So, your students made trading cards, what next?

Compile and print using this template: <http://bit.ly/ESTC-Compile2>

Have students exchange trading cards and take notes on other ES.

Host a gallery walk where students take notes on other ES.

Other ideas?

Grading Rubric

Joshua Mott

Student: _____

[view all assessments](#)

Rubric: Endangered Species Trading Cards

Endangered Species Trading Cards



	Excellent 3 pts	Good 2 pts	Poor 1 pts
Aesthetics	Excellent Trading Cards look well put together. All parenthesis are removed in favor of just text. Common Name is larger than Scientific name. Scientific name is italicized. Picture is centered.	Good Trading Cards look well put together. All parenthesis are removed in favor of just text. Picture is centered.	Poor Trading Card does not look well put together. Parenthesis are remaining for some or all categories.
Front	Excellent Information for Status, Country/Region, Number of mature individuals, and Habitat and Ecology complete and accurate.	Good Information for Status, Country/Region, Number of mature individuals, and Habitat and Ecology complete but one of those categories includes inaccurate information.	Poor One or more of the categories on the front is missing or most of the information is inaccurate.
Back	Excellent All Threats and Conservation Actions are included.	Good Some Threats and Conservation Actions are included.	Poor Threats or Conservation Action Needed is missing.

Build free rubrics at www.iRubric.com.

Rubric Code: **H2W9C67**

Questions?